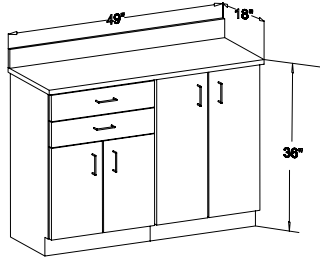


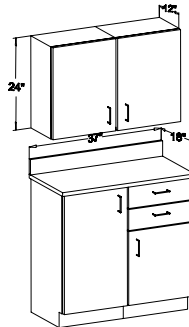
PRO-LINE PROFESSIONAL CABINETS

TYPICAL "PRO-LINE" CABINET GROUPINGS:
 PRICES ARE F.O.B. PLANT, NORTHVALE, NJ
 SEE PG 72 OF CAT #999 FOR COLOR SELECTION

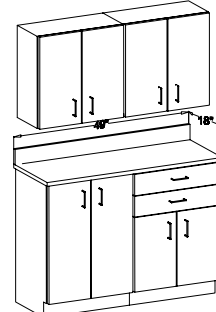
CABINET SELECTION AND COUNTERTOP SIZE CAN BE
 VARIED TO SUIT YOUR NEEDS. GROUPS AVAILABLE AS
 SHOWN OR OPPOSITE HAND. ALL GROUPS AVAILABLE
 WITH OPTIONAL PL-S SINK. (PLEASE SPECIFY ON ORDER)



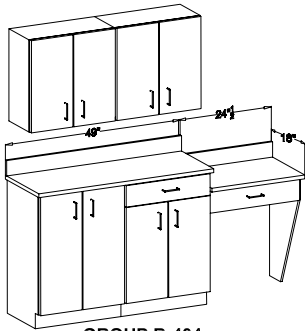
GROUP B-401
 SHIP WT: 180LBS



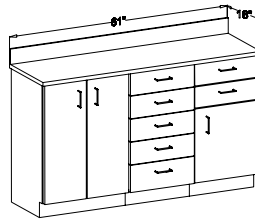
GROUP B-402
 SHIP WT: 230LBS



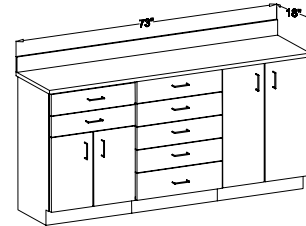
GROUP B-403
 SHIP WT: 270LBS



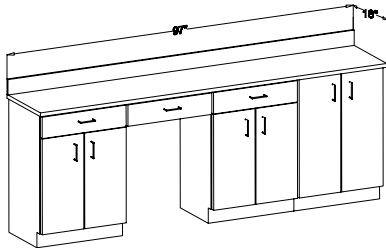
GROUP B-404
 SHIP WT: 280 LBS



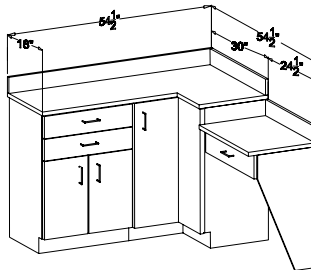
GROUP B-405
 SHIP WT: 265LBS



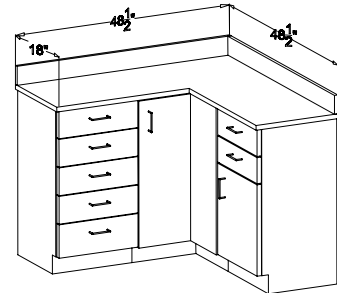
GROUP B-406
 SHIP WT: 295 LBS



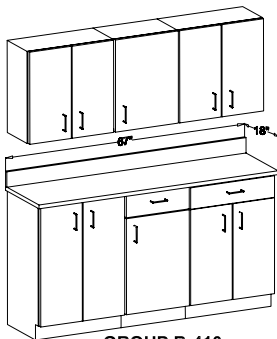
GROUP B-407
 SHIP WT: 290 LBS



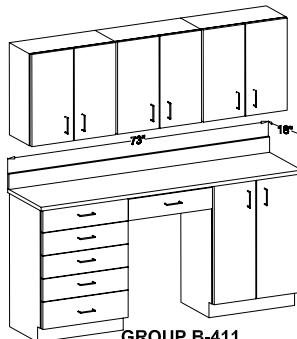
GROUP B-408
 SHIP WT: 255 LBS



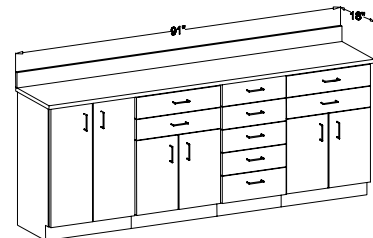
GROUP B-409
 SHIP WT: 300 LBS



GROUP B-410
 SHIP WT: 380 LBS



GROUP B-411
 SHIP WT: 360 LBS



GROUP B-412
 SHIP WT: 380 LBS

ALL WALL CABINETS IN ABOVE GROUPS ARE 24" HIGH X 12" DEEP (ALSO AVAILABLE IN 30" HIGH.) 18 1/2"D
 COUNTERTOPS ABOVE ARE SHOWN WITH STANDARD 1/2" OVERHANG ON EACH END.